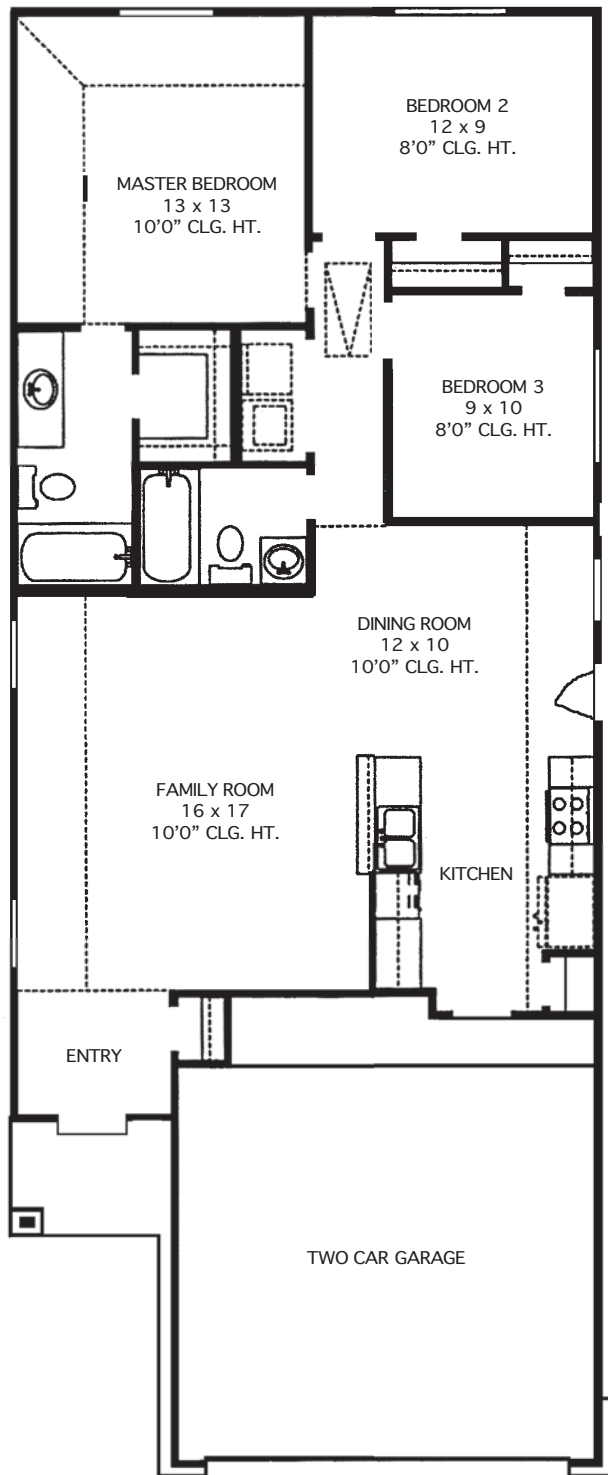


THE PERTH • 1,169 Sq. Ft.

- 3 Bedrooms, 2 Baths
- Boxed Window in Dining Room
- Walk-In Closet in Master Bedroom
- 10' Ceilings in Common Areas
- Separate Family and Dining Rooms



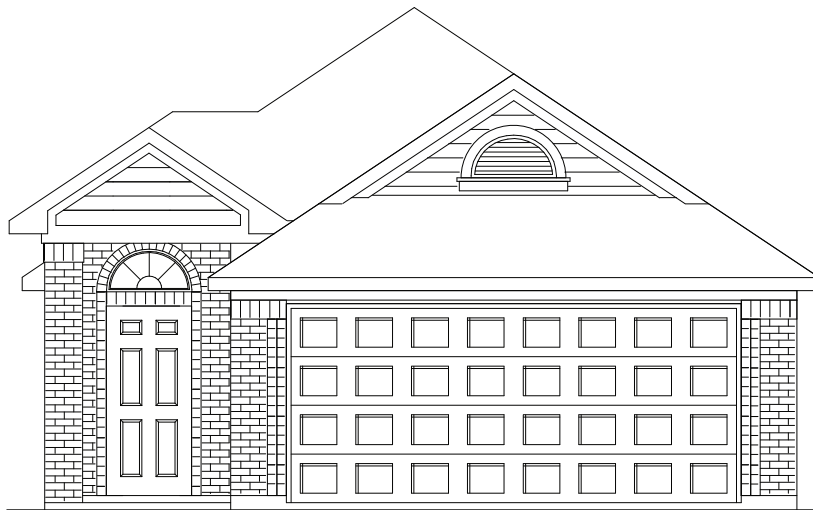
All square footage is approximate. Anglia Homes reserves the right to change specifications and designs without notice. AT



THE PERTH • 1,169 Sq. Ft.



ELEVATION A



ELEVATION B



ELEVATION C

All elevations and floor plan renderings may vary due to community specific Deed Restrictions, Building Code Requirements or Subdivision Builder Requirements as listed on Design Feature Sheet.